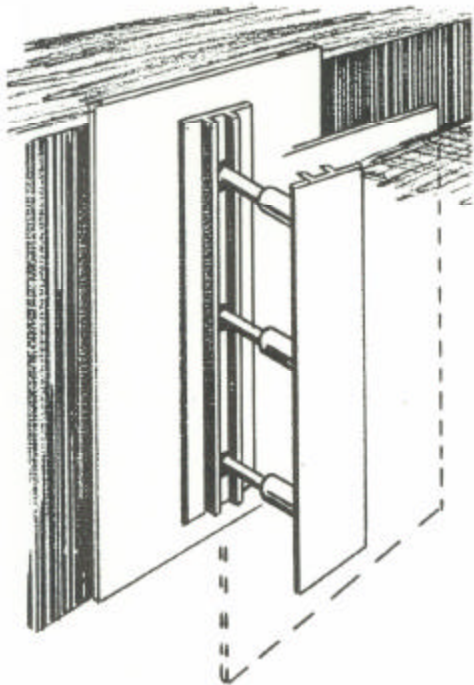
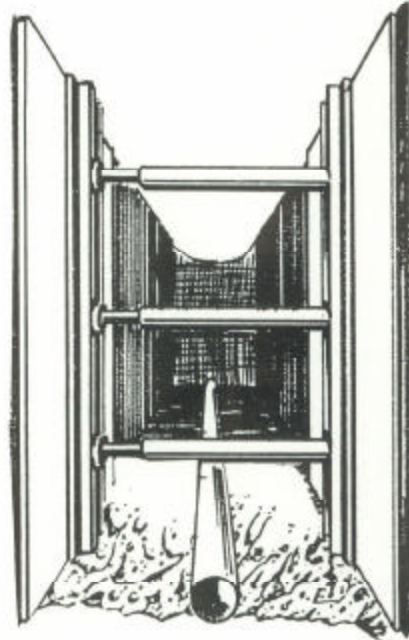


MULTI-SHORES

ALUMINUM HYDRAULIC SHORING

MULTI-SHORE ALUMINUM HYDRAULIC SHORING EXERTS PRESSURE AGAINST TRENCH WALLS TO STABILIZE SOILS.

THIS PROTECTS PERSONNEL WORKING IN THE TRENCHES AND ALSO SUPPORTS ANY UTILITIES, BUILDING FOOTINGS, ETC. IN THE AREA.



SIZES: 5' X 4'
8' X 4'
12' X 4'
16' X 4'

- TRENCH WIDTH FROM 18" TO 12 FT
- ABOVE GROUND INSTALLATION AND REMOVAL
- LOCKING DEVICE
- CUSTOM SIZES AVAILABLE
- PICK-UP AND DELIVERY

DIRECT

EQUIPMENT LTD.

RENTALS • SERVICE • SALES

1-800-667-7467